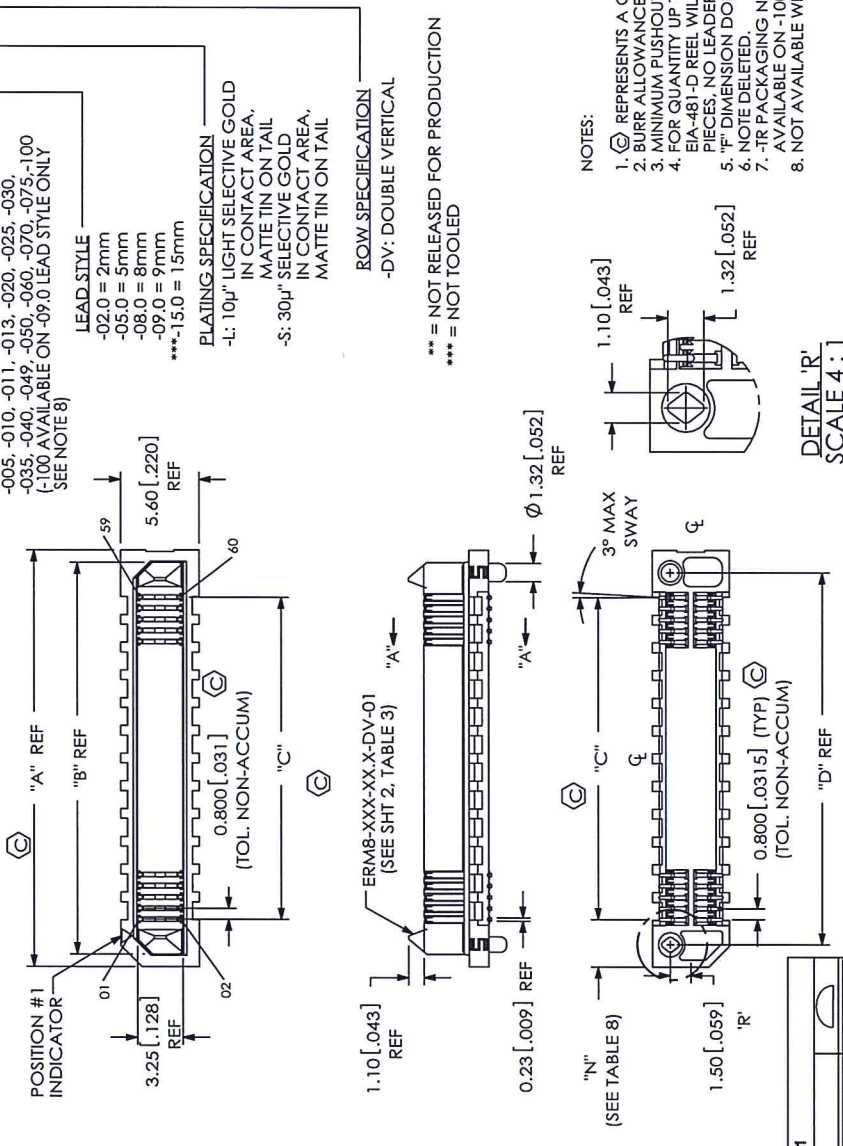


REVISION AL

DO NOT SCALE FROM THIS PRINT

DESIGNED AND DIMENSIONED IN MILLIMETERS [INCHES]



ERM8-XXX-XX-X-DV-XXXX-XX

- NO. OF POSITIONS (PER ROW)**
 -005: -010, -011, -013, -020, -025, -030,
 -035, -040, -049, -050, -060, -070, -075, -100
 (-100 AVAILABLE ON -.09.0 LEAD STYLE ONLY
 SEE NOTE 8)
- LEAD STYLE**
 -02.0 = 2mm
 -05.0 = 5mm
 -08.0 = 8mm
 -09.0 = 9mm
 ***-15.0 = 1.5mm
- PLATING SPECIFICATION**
 -L: 10µ" LIGHT SELECTIVE GOLD
 IN CONTACT AREA,
 MATTE TIN ON TAIL
 -S: 30µ" SELECTIVE GOLD
 IN CONTACT AREA,
 MATTE TIN ON TAIL
- ROW SPECIFICATION**
 -DV: DOUBLE VERTICAL
- PACKAGING**
 -TR: TAPE & REEL (SEE NOTES 4 & 7)
 -TY: TRAY (SEE NOTE 7)
- OPTIONS**
 -K: POLYIMIDE FILM PAD
 (USE K-DOT-157-250-.005)
 -DS: DIFFERENTIAL PAIR (HOT SWAP)
 (AVAILABLE ONLY ON -.05.0 LEAD STYLE)
 (SEE TABLE 4 FOR POSITION AVAILABILITY)
 -L: LATCHES
 (AVAILABLE ONLY ON -.05.0)
 (SEE TABLE FOR AVAILABILITY) (SEE TABLE 3, SHT 2)
 (NOT AVAILABLE WITH -EGP & -EGPS)
 -EGP: EXTENDED GUIDE POSTS
 (AVAILABLE ONLY ON -.05.0 LEAD STYLE)
 (NOT AVAILABLE WITH -L OPTION)
 -EGPS: EXTENDED GUIDE POST SHEILD
 (AVAILABLE ONLY ON -.05.0 LEAD STYLE)
 (NOT AVAILABLE WITH -L OPTION)
 -F010, -020, -025, & -030 POSITIONS ONLY
 -DSP: -DS OPTION WITH -EGP: (-13 & -25 POS ONLY)
 -DSS: -DS OPTION WITH -EGPS: (10 & 25 POS ONLY)

*** = NOT RELEASED FOR PRODUCTION
 *** = NOT TOOLED

NOTES:

1. Ⓢ REPRESENTS A CRITICAL DIMENSION.
2. BURR ALLOWANCE: 0.0381[.0015] MAX.
3. MINIMUM PUSHOUT FORCE: TERMINAL: 2.22 N [5 LB.], WELD TAB 4.45 N [1 LB.].
 FOR QUANTITY UP TO 49 PIECES, NO LEADER, TRAILER, OR
 EIA-481-D REEL WILL BE SUPPLIED. FOR QUANTITY OF 50-124
 PIECES, NO LEADER OR TRAILER WILL BE SUPPLIED.
5. "F" DIMENSION DOES NOT APPLY TO -EGP & -EGPS OPTION, SEE FIG. 5 & 6.
6. NOTE DELETED.
7. -TR PACKAGING NOT AVAILABLE ON THE 100 POSITION: -TY PACKAGING ONLY
 AVAILABLE ON -100 POSITION.
8. NOT AVAILABLE WITH -L, -EGP & -EGPS OPTIONS.

DETAIL 'R'
 SCALE 4:1

TABLE 1

No. OF POS.	"N"	"R"
-005, -010, -011, -013, -020, -025, -030, -035	0.10 [.004]	0.12 [.005]
-040, -049, -050, -060	0.12 [.005]	0.15 [.006]
-070, -075, -100	0.15 [.006]	

FIG. 1
 (ERM8-030-02.0-X-DV-XX SHOWN)
 (SOME CENTER FEATURES REMOVED FOR CLARITY)

TABLE 5

POSITION	"A"	"B"	"C"	"D"	"H"
-005	10.00 [1.394]	8.20 [3.23]	3.200 [1.260]	6.80 [2.68]	3.00 [1.18]
-010	14.00 [1.575]	12.20 [4.80]	7.200 [2.835]	10.80 [4.25]	5.00 [1.97]
-011	14.80 [1.583]	13.00 [5.12]	8.000 [3.150]	11.60 [4.57]	5.40 [2.12]
-013	16.40 [1.646]	14.60 [5.75]	9.600 [3.780]	13.20 [5.20]	6.20 [2.44]
-020	22.00 [1.866]	20.20 [7.95]	15.200 [5.984]	18.80 [7.40]	9.00 [3.54]
-025	26.00 [1.024]	24.20 [9.53]	19.200 [7.559]	22.80 [8.98]	11.00 [4.33]
-030	30.00 [1.181]	28.20 [1.110]	23.200 [9.134]	26.80 [1.055]	13.00 [5.12]
-035	34.00 [1.339]	32.20 [1.268]	27.200 [1.0709]	30.80 [1.213]	15.00 [5.90]
-040	38.00 [1.496]	36.20 [1.425]	31.200 [1.2283]	34.80 [1.370]	17.00 [6.68]
-049	45.20 [1.780]	43.40 [1.709]	38.400 [1.5118]	42.00 [1.654]	20.60 [8.11]
-050	46.00 [1.811]	44.20 [1.740]	39.20 [1.543]	42.80 [1.685]	21.00 [8.27]
-060	54.00 [2.126]	52.20 [2.055]	47.20 [1.858]	50.80 [2.000]	25.00 [9.84]
-070	62.00 [2.441]	60.20 [2.370]	55.20 [2.173]	58.80 [2.315]	29.00 [1.142]
-075	66.00 [2.598]	64.20 [2.528]	59.20 [2.331]	62.80 [2.472]	31.00 [1.220]
-100	86.00 [3.386]	84.20 [3.315]	79.20 [3.118]	82.80 [3.260]	41.00 [1.614]

TABLE 2 (REF)

ERM8 LEAD STYLE	STACK HEIGHT	ERP8 LEAD STYLE
-05.0	-07.0	***-10.0
-02.0	7.0MM	12.0MM
-05.0	10.0MM	15.0MM
-08.0	13.0MM	18.0MM
-09.0	14.0MM	19.0MM
***-15.0	20.0MM	25.0MM

(** = NOT TOOLED)

TABLE 6

HEIGHT	"E"	"F"	"G"	"U"
-02.0	1.605 [0.632]	5.965 [2348]	5.04 [198]	6.765 [2663]
-05.0	4.605 [1.813]	8.905 [3508]	7.98 [314]	9.765 [3844]
-08.0	7.605 [2.994]	11.905 [4687]	10.98 [432]	12.765 [5026]
-09.0	8.605 [3.411]	12.905 [5081]	11.98 [472]	13.765 [5419]
***-15.0	14.605 [5.750]	18.905 [7443]	17.98 [708]	19.765 [7781]

(** = NOT TOOLED)

TABLE 8

OPTION	"N"	"U"
NONE	3.40 [134]	
-L, -EGP	4.90 [193]	

UNLESS OTHERWISE SPECIFIED,
 DIMENSIONS ARE IN MILLIMETERS [INCHES].
 TOLERANCES ARE: ANGLES 2°

PROPRIETARY NOTE
 THIS DOCUMENT CONTAINS INFORMATION
 CONFIDENTIAL AND PROPRIETARY TO
 SAMTEC, INC. AND SHALL NOT BE REPRODUCED
 OR TRANSMITTED IN ANY FORM OR BY ANY
 MEANS, ELECTRONIC OR MECHANICAL, FOR
 PURPOSE OTHER THAN THAT WHICH IT WAS
 OBTAINED WITHOUT THE EXPRESSED WRITTEN
 CONSENT OF SAMTEC, INC.

MATERIAL: DO NOT SCALE DRAWING
 INSULATOR: LCP COLOR: BLACK
 TERMINAL: PHOS BRONZE
 LATCH: B6CU
 SHIELD: PHOS BRONZE

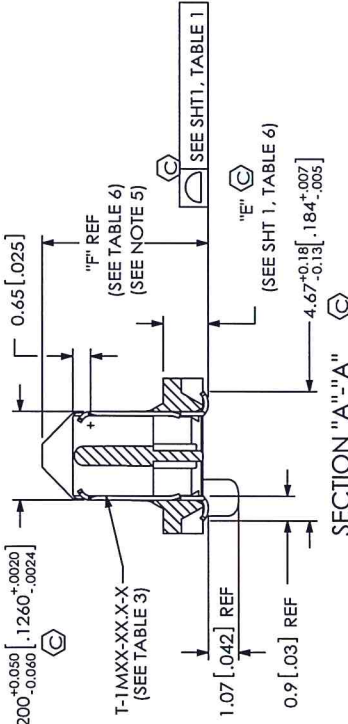
SHEET SCALE: 2:1



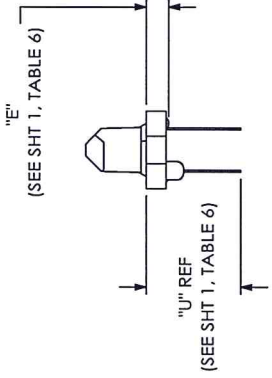
520 PARK EAST BLVD, NEW ALBANY, IN 47150
 PHONE: 812-944-6733 FAX: 812-948-5047
 E-MAIL: INFO@SAMTEC.COM CODE: 35322

DESCRIPTION:
 0.8MM EDGE RATE TERMINAL ASSEMBLY
 DWG. NO.
 ERM8-XXX-XX-X-DV-XXXX-XX
 BY: KNOWLDEN 9/27/2005 SHEET 1 OF 6

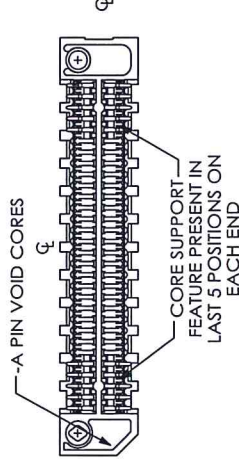
REVISION AL



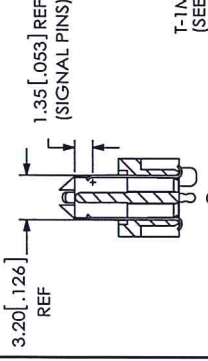
SECTION "A'' 'A''"
SCALE 4:1



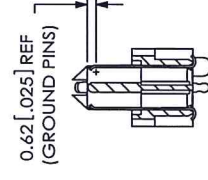
IN-PROCESS 1



BOTTOM VIEW
(ERM8-030-09-0-X-DV-XX SHOWN)
(DIFFERENT AS SHOWN, OTHERWISE SAME AS FIG 1)



SECTION "N''-'N''"



SECTION "p''-'p''"

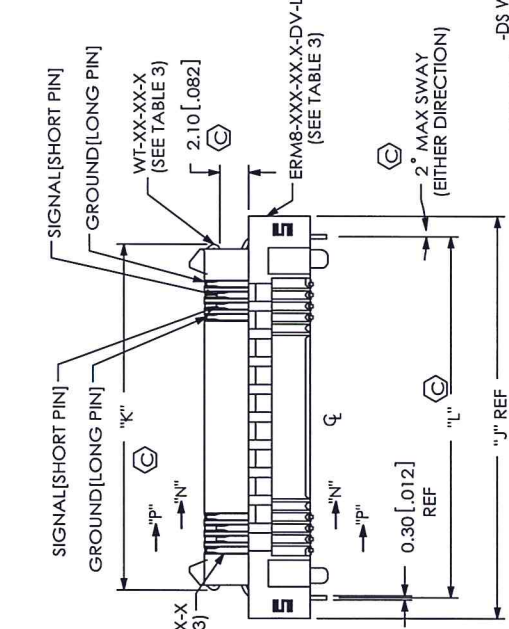


FIG 3
-DS WITH -L OPTION
(-DS AVAILABLE ON -.05.0 LEADSTYLE ONLY)
(-L AVAILABLE ON -.05.0 LEAD STYLE ONLY)
(ERM8-025-05-0-X-DV-DS-L SHOWN)
(SAME AS FIG 1, EXCEPT AS SHOWN)
(SOME CENTER FEATURES REMOVED FOR CLARITY)

TABLE 4
-DS & -L OPTION AVAILABILITY
(-DS AVAILABLE ON -.05.0 LEADSTYLE ONLY)
(-L AVAILABLE ON -.05.0, -.08.0, -.09.0 & ***15.0 LEADSTYLES ONLY. -L ON -.08.0 & -.09.0 NOT TOOLED)

POSITION	-L	-DS	-L
-005	-L	-DS	-L
-010	-L	-DS	-L
-011	-L	-DS	-L
-013	-L	-DS	-L
-020	-L	-DS	-L
-025	-L	-DS	-L
-030	-L	-DS	-L
-035	-L	-DS	-L
-040	-L	-DS	-L
-049	-L	-DS	-L
-050	-L	-DS	-L
-060	-L	-DS	-L
-070	-L	-DS	-L
-075	-L	-DS	-L

TABLE 7

POSITION	"J"	"K"	"L"	"M"
-005	13.00 [0.512]	8.90 [0.394]	10.00 [0.394]	4.50 [0.177]
-010	17.00 [0.669]	12.90 [0.508]	14.00 [0.551]	6.50 [0.256]
-011	17.80 [0.701]	13.70 [0.539]	14.80 [0.583]	6.90 [0.271]
-013	19.40 [0.764]	15.30 [0.602]	16.40 [0.646]	7.75 [0.303]
-020	25.00 [0.984]	20.90 [0.823]	22.00 [0.866]	10.50 [0.413]
-025	29.00 [1.142]	24.90 [0.980]	26.00 [1.024]	12.50 [0.492]
-030	33.00 [1.289]	28.90 [1.138]	30.00 [1.181]	14.50 [0.571]
-035	37.00 [1.457]	32.90 [1.339]	34.00 [1.339]	16.50 [0.649]
-040	41.00 [1.614]	36.90 [1.453]	38.00 [1.496]	18.50 [0.728]
-049	48.20 [1.898]	44.10 [1.736]	45.20 [1.780]	22.10 [0.870]
-050	49.00 [1.929]	44.90 [1.768]	45.00 [1.811]	22.50 [0.886]
-060	57.00 [2.244]	52.90 [2.083]	54.00 [2.126]	26.50 [1.043]
-070	65.00 [2.559]	60.90 [2.398]	62.00 [2.441]	30.50 [1.201]
-075	69.00 [2.717]	64.90 [2.555]	66.00 [2.598]	32.50 [1.279]

TABLE 3

OPTION	STYLE	ERM8-XXX-XX-X-DV-01	T-1MXX-XX-XX	WT-XX-XX-X	"S"	"T"
-02.0		ERM8-XXX-02.0-DV-01	T-1M37-02.0-X			
-05.0		ERM8-XXX-05.0-DV-01	T-1M37-05.0-X			
NONE		ERM8-XXX-08.0-DV-01	T-1M37-08.0-X		N/A	
		ERM8-XXX-09.0-DV-01	T-1M37-09.0-X			
		ERM8-XXX-05.0-DV-01T ERM8H-XXX-10.0-DV	T-1M88-01.0-X		N/A	
-DS		ERM8-XXX-05.0-DV-XX	T-1M48-05.0-X			
-EGP		ERM8-XXX-05.0-DV-EGP	T-1M37-05.0-X		WT-29-06-T 1.17 [0.046]	0.97 [0.038]
-EGPS		ERM8-XXX-05.0-DV-EGPS	T-1M37-05.0-X		SH-29-XX02 1.17 [0.046]	0.97 [0.038]
-L		ERM8-XXX-05.0-DV-L	T-1M37-05.0-X		WT-29-03-F 1.17 [0.046]	0.97 [0.038]



520 PARK EAST BLDV, NEW ALBANY, IN 47150
PHONE: 812-944-6733 FAX: 812-948-5047
e-Mail: info@santec.com code 55322

DESCRIPTION:
0.8MM EDGE RATE TERMINAL ASSEMBLY
DWG. NO.

ERM8-XXX-XX-X-DV-XXXX-XX

BY: KNOWLDEN 9/27/2005 SHEET 2 OF 6

PROPRIETARY NOTE
THIS DOCUMENT CONTAINS INFORMATION CONFIDENTIAL AND PROPRIETARY TO SAMTEC, INC. AND SHALL NOT BE REPRODUCED OR TRANSMITTED TO OTHER DOCUMENTS OR DISCLOSED TO OTHERS OR USED FOR ANY PURPOSES WITHOUT THE WRITTEN CONSENT OF SAMTEC, INC.

DO NOT SCALE DRAWING
SHEET SCALE: 2:1

REVISION AL

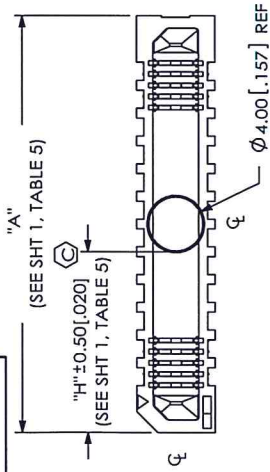


FIG 2
-K OPTION
(ERM8-030-XX-X-DV-K SHOWN)
(SOME CENTER FEATURES REMOVED FOR CLARITY)

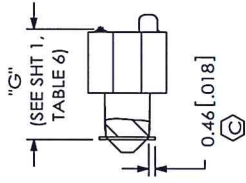


FIG 4
-K WITH -L OPTION
(ERM8-025-05.0-X-DV-K-L SHOWN)
(SAME AS FIG 2, EXCEPT AS SHOWN)
(SOME CENTER FEATURES REMOVED FOR CLARITY)

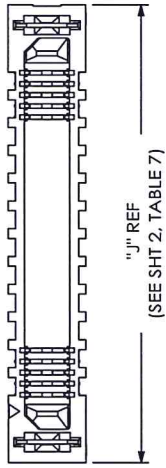
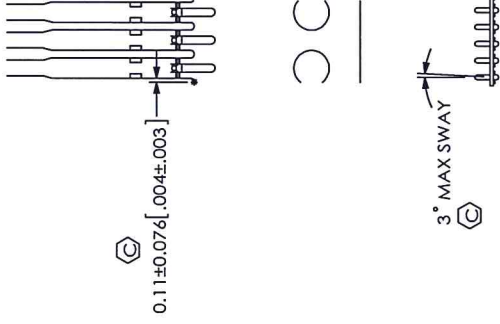
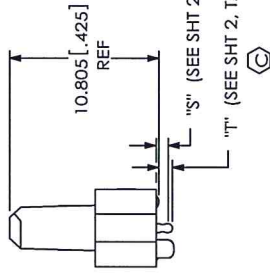
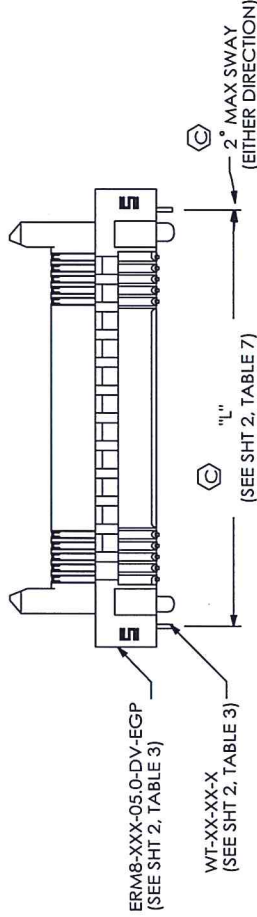


FIG 5
-EGP OPTION
(AVAILABLE ON -05.0 LEAD STYLE ONLY)
(ERM8-030-05.0-X-DV-EGP SHOWN)
(SAME AS FIG 3, EXCEPT AS SHOWN)
(SOME CENTER FEATURES REMOVED FOR CLARITY)



I-1M37-XX-XX
IN-PROCESS VIEW

PROPRIETARY NOTICE
THE DOCUMENT CONTAINS INFORMATION CONFIDENTIAL AND PROPRIETARY TO SAMTEC, INC. AND SHALL NOT BE REPRODUCED OR TRANSMITTED IN ANY FORM OR BY ANY MEANS, ELECTRONIC OR MECHANICAL, INCLUDING PHOTOCOPYING, RECORDING, OR BY ANY INFORMATION STORAGE AND RETRIEVAL SYSTEM, WITHOUT THE EXPRESS WRITTEN CONSENT OF SAMTEC, INC.

DO NOT SCALE DRAWING

SHEET SCALE: 2:1

Samtec

520 PARK EAST BLVD, NEW ALBANY, IN 47150
PHONE: 812-944-6723 FAX: 812-948-5522
E-MAIL: INFO@SAMTEC.COM CODE: 55222

DESCRIPTION: 0.8MM EDGE RATE TERMINAL ASSEMBLY

DWG. NO. ERM8-XXX-XX-X-DV-XXXX-XX

BY: KNOWLDEN 9/27/2005 SHEET 3 OF 6

REVISION AL

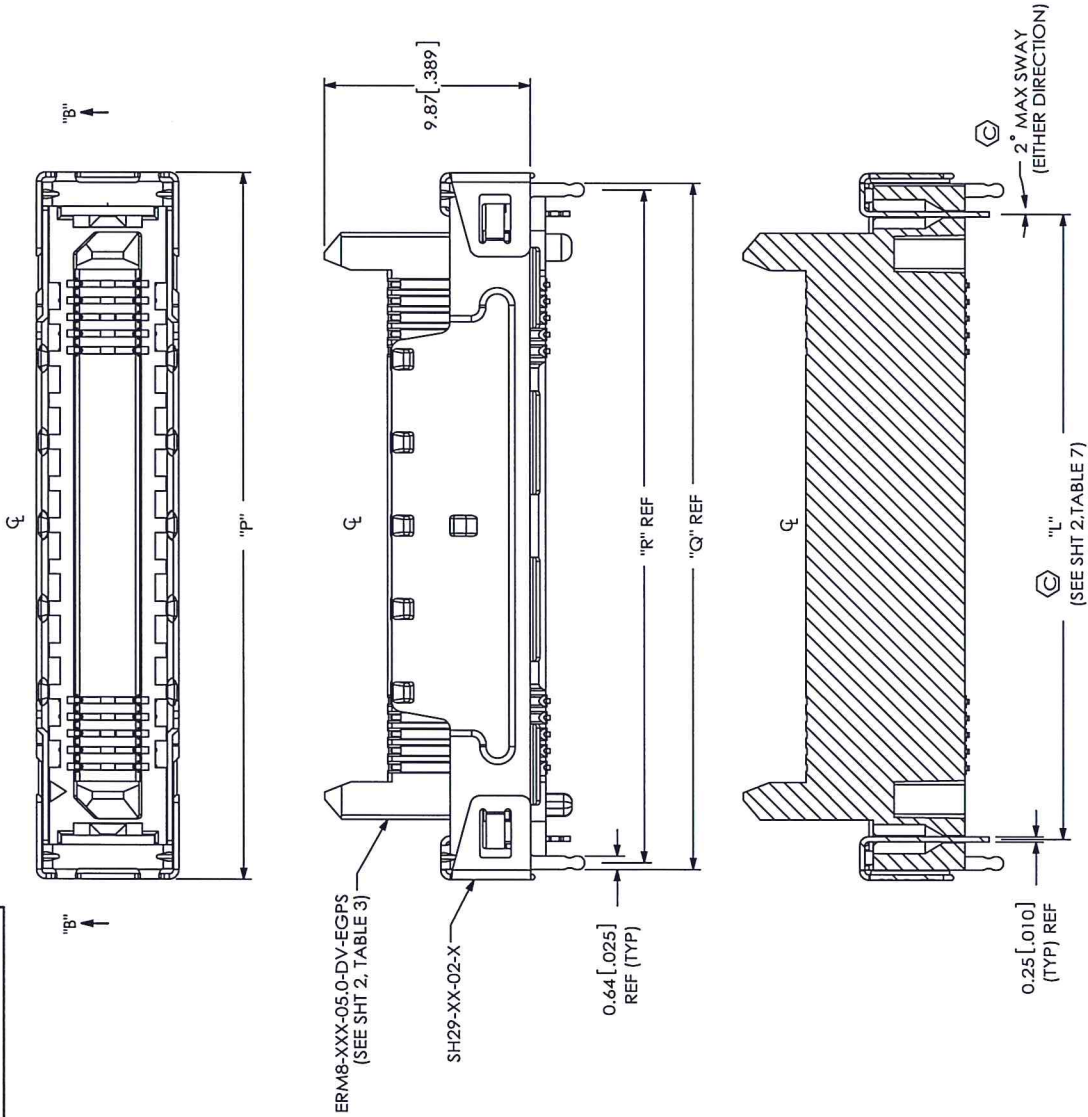


FIG 6
-EGPS OPTIONS
(AVAILABLE ON -05.0 LEAD STYLE ONLY)
(ERM8-030-05-0-X-DV-EGPS SHOWN)
(SAME AS FIG 5, EXCEPT AS SHOWN)

PROPRIETARY NOTE
THE DESIGN AND DRAWING INFORMATION CONTAINED HEREIN IS THE PROPERTY OF SAMTEC, INC. AND SHALL NOT BE REPRODUCED OR TRANSMITTED IN ANY FORM OR BY ANY MEANS, ELECTRONIC OR MECHANICAL, WITHOUT THE EXPRESS WRITTEN CONSENT OF SAMTEC, INC.

DO NOT SCALE DRAWING
SHEET SCALE: 3:1

TABLE 9

No. OF POS.	"P"	"Q"	"R"
-10	18.0 [0.71]	17.00 [0.669]	16.36 [0.644]
-20	26.0 [1.02]	25.00 [0.984]	24.36 [0.959]
-25	30.0 [1.18]	29.00 [1.142]	28.36 [1.117]
-30	34.0 [1.34]	33.00 [1.299]	32.36 [1.274]

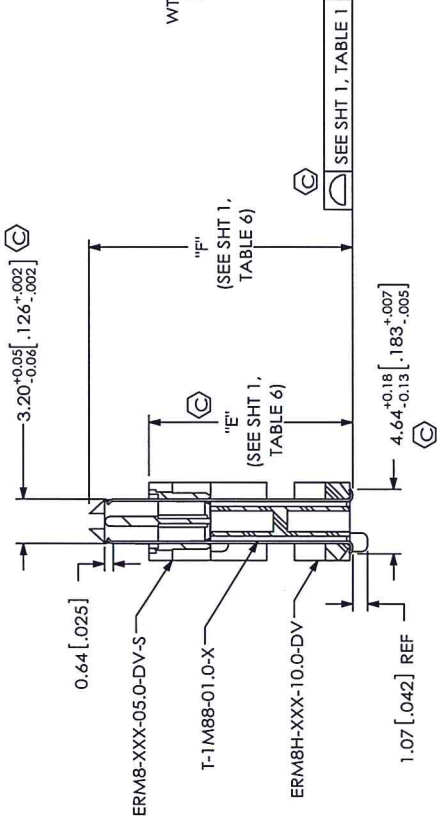
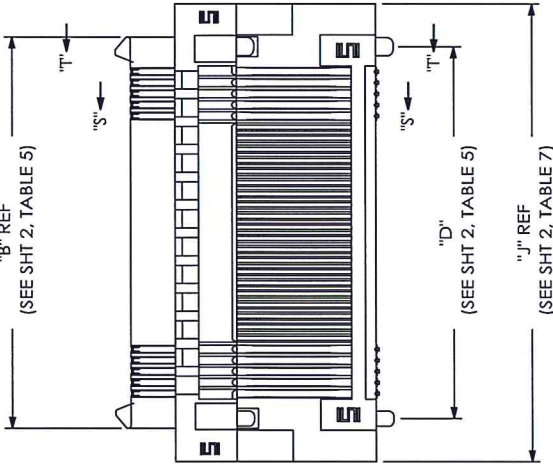
SECTION "B"-"B"



520 PARK EAST BLVD, NEW ALBANY, IN 47150
PHONE: 812-944-6733 FAX: 812-948-5047
e-Mail: info@SAMTEC.com code 55322

DESCRIPTION: 0.8MM EDGE RATE TERMINAL ASSEMBLY
DWG. NO. ERM8-XXX-XX-X-DV-XXXX-XX
BY: KNOWLDEN9/27/2005 SHEET 4 OF 6

REVISION AL



SECTION "S"-"S"

SECTION "T"-"T"

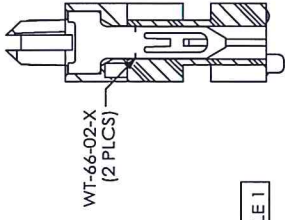
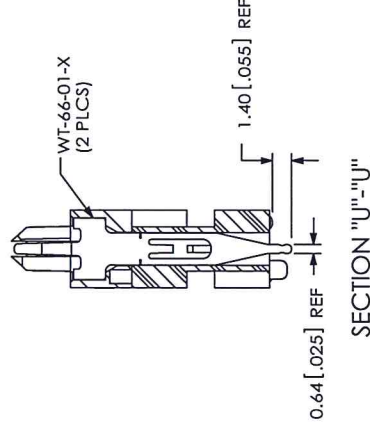
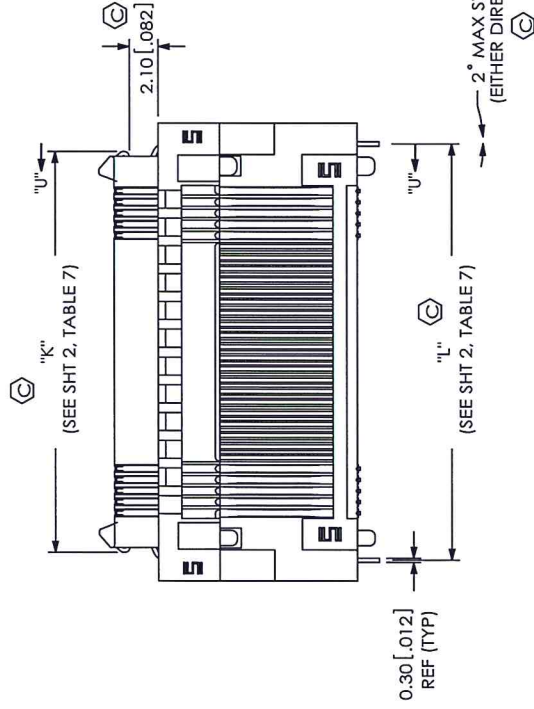


FIG. 7
 (**ERM8-030-15.0-X-DV SHOWN)
 (SOME CENTER FEATURES REMOVED FOR CLARITY)
 ***NOT TOOLED



SECTION "U"-"U"

FIG. 8
 (**ERM8-030-15.0-X-DV-L SHOWN)
 (SAME AS FIG. 7, EXCEPT AS SHOWN)
 ***NOT TOOLED

PROPRIETARY NOTE
 THIS DOCUMENT CONTAINS INFORMATION
 CONFIDENTIAL AND PROPRIETARY TO
 SAMTEC, INC. AND SHALL NOT BE REPRODUCED
 OR TRANSFERRED TO OTHER DOCUMENTS OR
 DISCLOSED TO OTHERS OR USED FOR ANY
 PURPOSES WITHOUT THE EXPRESSED WRITTEN
 CONSENT OF SAMTEC, INC.

DO NOT SCALE DRAWING

SHEET SCALE: 2:1

samtec

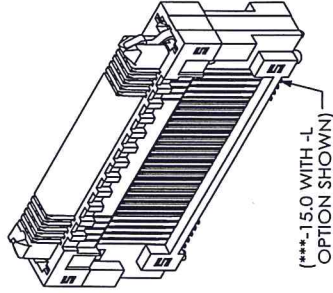
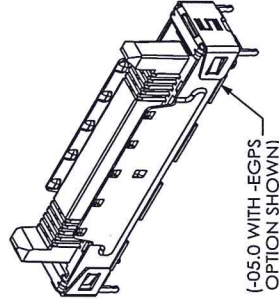
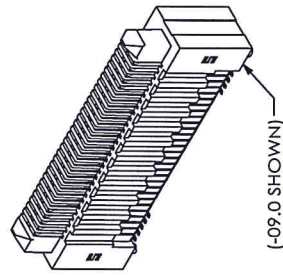
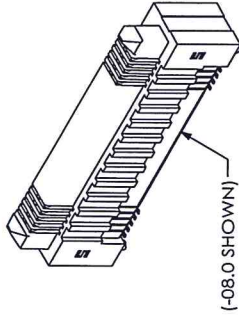
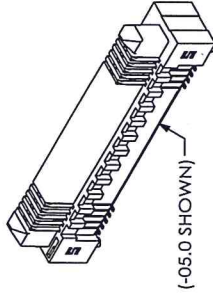
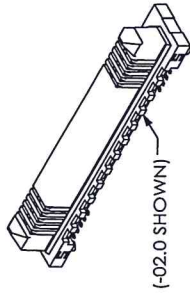
520 PARK EAST BLVD, NEW ALBANY, IN 47150
 PHONE: 812-944-6733 FAX: 812-948-5047
 E-MAIL: info@SAMTEC.COM CODB: 55332

DESCRIPTION: 0.8MM EDGE RATE TERMINAL ASSEMBLY

DWG. NO. ERM8-XXX-XX.X-X-DV-XXXX-XX

BY: KNOWLDEN 9/27/2005 SHEET 5 OF 6

REVISION AL



Il supporto tecnico al RUP

Ing. Federico Perini

Firma autografa sostituita a mezzo stampa ai sensi
dell'art. 3 comma 2 del D.Lgs. n. 39/1993

PROPRIETARY NOTE
THIS DOCUMENT CONTAINS INFORMATION
CONFIDENTIAL AND PROPRIETARY TO
SAMTEC, INC. AND SHALL NOT BE REPRODUCED
OR TRANSFERRED TO OTHER DOCUMENTS OR
DISCLOSED TO OTHERS OR USED FOR ANY
PURPOSE OTHER THAN THAT WHICH IT WAS
ORIGINALLY INTENDED FOR WITHOUT THE
CONSENT OF SAMTEC, INC.

DO NOT SCALE DRAWING

SHEET SCALE: 2:1

520 PARK EAST BLVD, NEW ALBANY, IN 47150
PHONE: 812-944-6733 FAX: 812-948-5047
e-Mail: info@SAMTEC.com code: 55322

DESCRIPTION: 0.8MM EDGE RATE TERMINAL ASSEMBLY

DWG. NO. ERM8-XXX-XX-X-X-DV-XXXX-XX

BY: KNOWLDEN 9/27/2005 SHEET 6 OF 6