

DO NOT SCALE FROM THIS PRINT

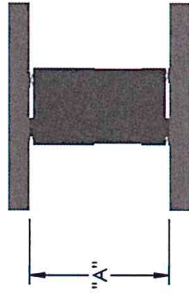


FIG. 1
ERF8-DV MATED ERM8-DV

TABLE 1		"A"	
ERF8-DV LEAD STYLE		-01	
ERM8-DV LEAD STYLE		-05.0	-07.0
		7.00 [.276]	9.00 [.354]
		10.00 [.394]	12.00 [.472]
		13.00 [.512]	15.00 [.591]
		14.00 [.551]	16.00 [.630]
		20.00 [.787]	22.00 [.866]
			25.00 [.984]

TABLE 2	
Fully Mated Board to Board Dimension "A" with Contact Wipe of 1.50[.059]	Max Allowable Board to Board Dimension "A" to Maintain Min Contact Wipe of 0.38[.015]
SEE TABLE 1	TABLE 1 DIM "A" + 1.12[.044]

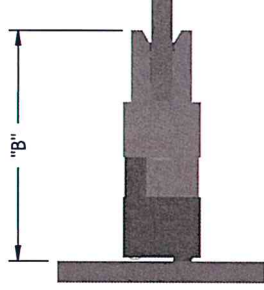


FIG. 2
ERM8-DV MATED ERF8-EM

TABLE 3		"B"	
ERF8-EM LEAD STYLE		-01	
ERM8-DV LEAD STYLE		-02.0	-05.0
		13.88 [.546]	16.88 [.665]
		19.88 [.783]	20.88 [.822]
		26.88 [1.058]	

TABLE 4	
Fully Mated Connector to Board Dimension "B" with Contact Wipe of 1.50[.059]	Max Allowable Connector to Board Dimension "B" to Maintain Min Contact Wipe of 0.38[.015]
SEE TABLE 3	TABLE 3 DIM "B" + 1.12[.044]

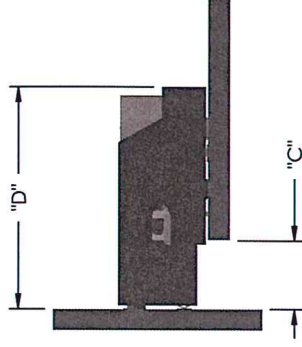


FIG. 3
ERM8-DV MATED ERF8-RA

TABLE 5		ERF8-RA LEAD STYLE	
		-01	
		"C"	"D"
ERM8-DV LEAD STYLE		-02.0	13.03 [.513]
		-05.0	16.03 [.631]
		-08.0	19.03 [.749]
		-09.0	20.03 [.789]
		-15.0	26.03 [1.025]

TABLE 6	
Fully Mated Board to Board Dimension "C" with Contact Wipe of 1.50[.059]	Max Allowable Board to Board Dimension "C" to Maintain Min Contact Wipe of 0.38[.015]
SEE TABLE 5	TABLE 5 DIM "C" + 1.12[.044]

TABLE 7	
Fully Mated Connector to Board Dimension "D" with Contact Wipe of 1.50[.059]	Max Allowable Connector to Board Dimension "D" to Maintain Min Contact Wipe of 0.38[.015]
SEE TABLE 5	TABLE 5 DIM "D" + 1.12[.044]

NOTES:

1. DRAWING ILLUSTRATES EFFECTIVE MATING RANGE OF CONNECTORS IN VARIOUS CONFIGURATIONS.
2. ALTHOUGH MAX DIMENSIONS ARE LISTED SAMTEC RECOMMENDS FULLY MATING COMPONENTS.
3. ALL DIMENSIONS BASED ON NOMINAL VALUES FOR SAMTEC RECOMMENDED PCB LAYOUTS.

PROPRIETARY NOTE
THE DOCUMENT CONTAINS INFORMATION CONFIDENTIAL AND PROPRIETARY TO SAMTEC. IT IS TO BE KEPT CONFIDENTIAL AND NOT REPRODUCED OR DISCLOSED TO OTHERS WITHOUT THE EXPRESS WRITTEN CONSENT OF SAMTEC, INC.



520 PARK EAST BLVD, NEW ALBANY, IN 47150
PHONE: 812-944-4733 FAX: 812-948-5077
e-Mail: info@SAMTEC.com code: 55322

REVISION E

ERX8 MATED VIEWS

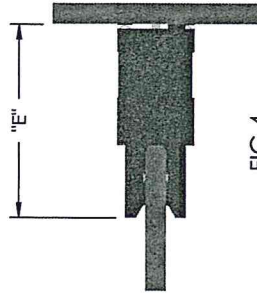


FIG 4
ERM8-EM MATED ERF8-DV

TABLE 8		"E"
ERM8-EM LEAD STYLE		-01
ERF8-DV LEAD STYLE	-05.0	14.00 [.551]
	-07.0	15.92 [.627]
	-10.0	19.00 [.748]

TABLE 9		Max Allowable Connector to Board Dimension "E" to Maintain Min Contact Wipe of 1.50[.059]
SEE TABLE 8	TABLE 8 DIM "E" + 1.12[.044]	



FIG 5
ERF8-EM MATED ERM8-EM

TABLE 10		Max Allowable Connector to Connector Dimension to Maintain Min Contact Wipe of 1.50[.059]
Fully Mated Connector to Connector Dimension with Contact Wipe of 1.50[.059]	20.79 [.819]	21.91 [.863]

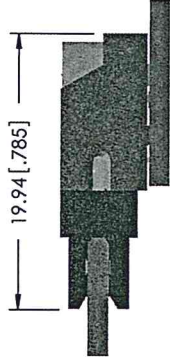


FIG 6
ERM8-EM MATED ERF8-RA

TABLE 11		Max Allowable Connector to Connector Dimension to Maintain Min Contact Wipe of 1.50[.059]
Fully Mated Connector to Connector Dimension with Contact Wipe of 1.50[.059]	19.94 [.785]	21.06 [.829]

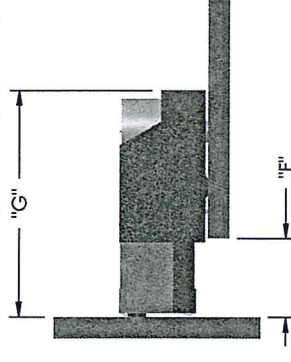


FIG 7
ERF8-DV MATED ERM8-RA

TABLE 12		ERM8-RA LEAD STYLE	
		"F"	"G"
ERF8-DV LEAD STYLE	-05.0	5.71 [.225]	16.41 [.646]
	-07.0	7.63 [.300]	18.33 [.722]
	-10.0	10.71 [.422]	21.41 [.843]

TABLE 13		Max Allowable Board to Board Dimension "F" to Maintain Min Contact Wipe of 1.50[.059]
SEE TABLE 12	TABLE 12 DIM "F" + 1.12[.044]	

TABLE 14		Max Allowable Connector to Board Dimension "G" to Maintain Min Contact Wipe of 1.50[.059]
SEE TABLE 12	TABLE 12 DIM "G" + 1.12[.044]	

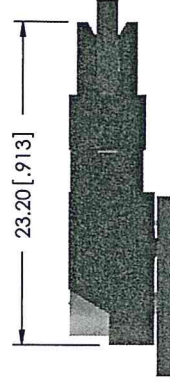


FIG 8
ERM8-RA MATED ERF8-EM

TABLE 15		Max Allowable Connector to Connector Dimension to Maintain Min Contact Wipe of 1.50[.059]
Fully Mated Connector to Connector Dimension with Contact Wipe of 1.50[.059]	23.20 [.913]	24.32 [.957]

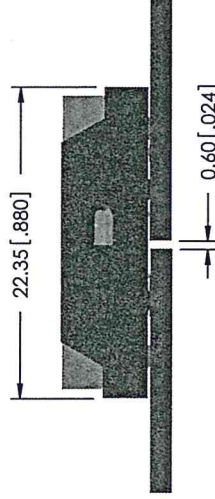


FIG 9
ERF8-RA MATED ERM8-RA

TABLE 16		Max Allowable Connector to Connector Dimension to Maintain Min Contact Wipe of 1.50[.059]
Fully Mated Connector to Connector Dimension with Contact Wipe of 1.50[.059]	22.35 [.880]	23.47 [.924]

TABLE 17		Max Allowable Board to Board Dimension to Maintain Min Contact Wipe of 1.50[.059]
Fully Mated Board to Board Dimension with Contact Wipe of 1.50[.059]	0.60 [.024]	1.72 [.068]

PROPRIETARY NOTE
THIS DOCUMENT CONTAINS INFORMATION CONFIDENTIAL AND PROPRIETARY TO SAMTEC, INC. AND SHALL NOT BE REPRODUCED OR TRANSFERRED TO OTHER DOCUMENTS OR MEDIA IN ANY FORM OR BY ANY MEANS, WITHOUT THE EXPRESS WRITTEN CONSENT OF SAMTEC, INC.



520 PARK EAST BLVD, NEW ALBANY, IN 47150
PHONE: 812-944-6733 FAX: 812-948-5047
e-Mail: info@SAMTEC.com code 55322